

ALL VERTICAL AND  
HORIZONTAL REINFORCING  
AS SPECIFIED

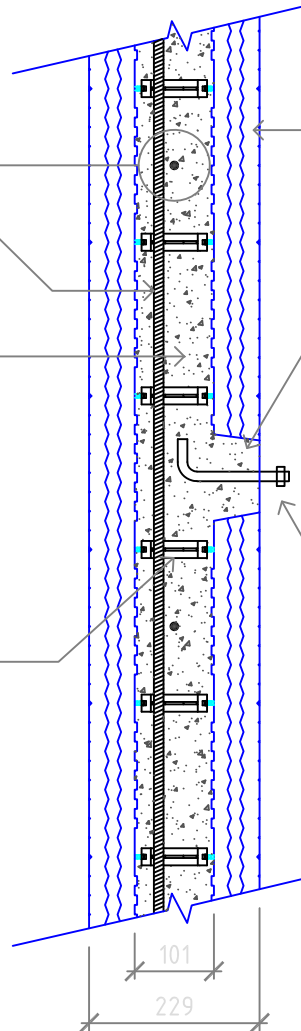
101mm REINFORCED  
CONCRETE CORE

101mm CONNECTORS

ECO-BLOCK STANDARD  
EXPANDED POLYSTYRENE FORM  
USING 101mm CONNECTORS

REMOVE FORMS AS NECESSARY  
TO MATCH FASTNER LOCATIONS

ANCHOR BOLT, MASONRY SCREW OR  
THREADED ROD AS SPECIFIED



**NOTE:**

IT IS THE RESPONSIBILITY OF THE  
DESIGNER / END USER TO VERIFY THAT  
STRUCTURES BUILT WITH ECO-BLOCK  
HAVE BEEN DESIGNED, ENGINEERED, AND  
CONSTRUCTED IN ACCORDANCE WITH ALL  
APPLICABLE BUILDING CODES AND REGULATIONS

**ECO-Block, Pty Ltd**

INSULATING CONCRETE FORMS  
"*... SAVING AUSTRALIAN ENERGY*"™



34 Gracemere St.  
Newmarket QLD 4051  
[www.eco-blockaustralia.com.au](http://www.eco-blockaustralia.com.au)

ECO-BLOCK 230 SERIES FORMS  
WALL MOUNTED  
FIXTURE ATTACHMENT HEAVY LOAD  
101mm CONCRETE CORE  
(ECO-BLOCK 230 Series)

DATE: 5/2009

SCALE: 1:10

REVISION: 1

DRAWING NUMBER:

**M-70-00010**